



GPL-4CT-2V

- **PREMIUM DEEP CYCLE AGM TECHNOLOGY**

- Part Number: GPL-4CT-2V
- 2V
- CCA: 2025
- Reserve Capacity [Ah@20hr rate]: 660
- Weight: 66 lbs.
- Length: 10.28 in (261.1 mm)
- Width: 7.06 in (179.3 mm)
- Height: 9.92 in (251.8 mm)



The GPL-4CT-2V is a high performance, Mil-Spec, AGM battery, produced in the United States. Due to the Lifeline Battery's quality construction, it has an industry leading 2% per month self discharge rate at 77°F (25°C), compared to 10%+ for conventional batteries. Coast Guard approved, DOT Haz Mat Exempt, and longer lifespans than conventional batteries. Warrantied installations include marine, yacht, and other seafaring applications.

The Lifeline GPL-4CT-2V AGM Battery is specifically designed for deep-cycle applications.

All Lifeline deep-cycle batteries are hand-made in the USA. These batteries are Coast Guard approved and have had to pass demanding mil spec requirements as they are onboard numerous US Military vessels. They are designed to deliver industry leading reserve capacities and life-cycle capabilities. The perfect combination of premium quality materials and perfected proprietary processes have catapulted Lifeline to an industry leader in value and customer satisfaction. All Lifeline deep cycle batteries are backed with an industry leading 5 year warranty.

MODEL **GPL-4CT-2V**

VOLTAGE **2V**

CAPACITY **660Ah @ 20Hr**

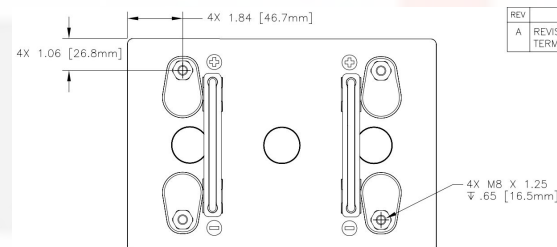
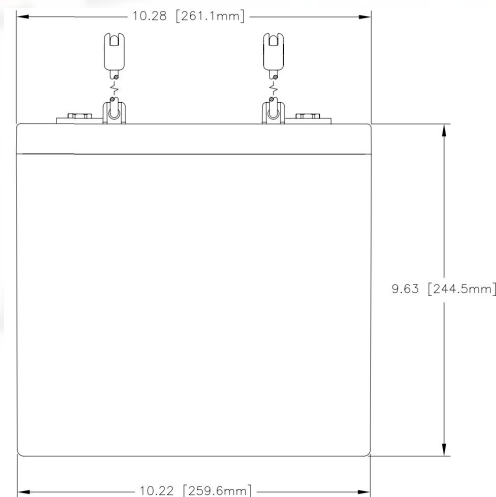
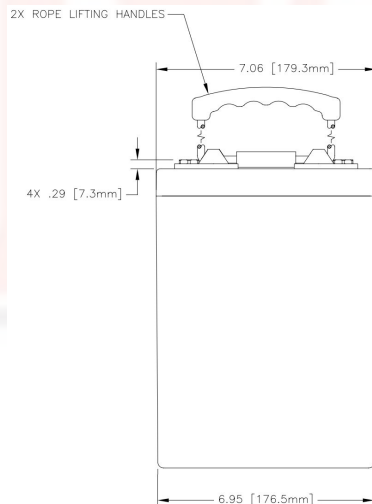
BATTERY TYPE **Deep Cycle AGM Battery**

PRODUCT + PHYSICAL SPECIFICATIONS

Part Number	Voltage	Dimensions ^c Inches (mm)			Weight Lbs. (kg)
		Length	Width	Height ^f	
GPL-4CT-2V	2	10.28(261.1)	7.06 (179.3)	9.92 (251.8)	66 (30)

ELECTRICAL SPECIFICATIONS

Cold Cranking Amps		Minutes of Discharge			Rated Cap. Amps Hours @ 20hr Rate
MCA	CCA	@ 25 Amps	@ 15 Amps	@ 8 Amps	
2500	2025	1476	2568	5076	660



REV	REVISION
A	REVISI TERMI